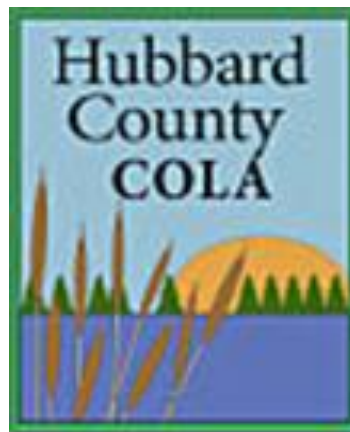


The Value of Clean Water – A Shared Resource and Responsibility

- **KEY TOPICS TO DISCUSS**

- 1) **Story of COLA**
- 2) **The State of Our Lakes**
- 3) **The Value of Clean Water**
- 4) **The Economics of AIS**
- 5) **Local Action – How can You Help?**





Story of COLA

- 29 Lake Associations, 37 Lake, 2100+ Members
- Hubbard COLA is the Leader in Protecting Hubbard County Lakes and Rivers.
- Celebrating COLA's 30 Year Anniversary in 2018
- Website: www.hubbardcolamn.org

Hubbard County Coalition of Lake Associations (HC COLA) Strategy Map

www.hubbardcolamn.org

Mission: HC COLA's mission is to protect and enhance the quality of our lakes and rivers, preserve the economic, recreational and natural environmental values of our shorelands and promote the responsible use of our waters and related habitats. HC COLA's mission enhances, promotes and protects the interests of lakeshore property owners, lake associations, local government, the general public and future generations.

Values:

1. Collaboration among our members
2. Open & honest communications
3. Leadership, as an organization and as individuals, toward increased citizen awareness and education
4. Active, engaged volunteers

Vision: HC COLA is the Leader in Protecting Hubbard County Lakes & Rivers



Strategic Actions: We will employ the following strategies to achieve our vision.

1. Cultivate Leadership
2. Continuously Improve Organizational Effectiveness
3. Facilitate Education, Workshops and Programs
4. Manage Communications & Public Relations
5. Develop Membership
6. Address Multiple Revenue Streams
7. Partner as Government Liaison
8. Shield Lakes & Rivers from Aquatic Invasive Species



Last Reviewed: 1/9/17

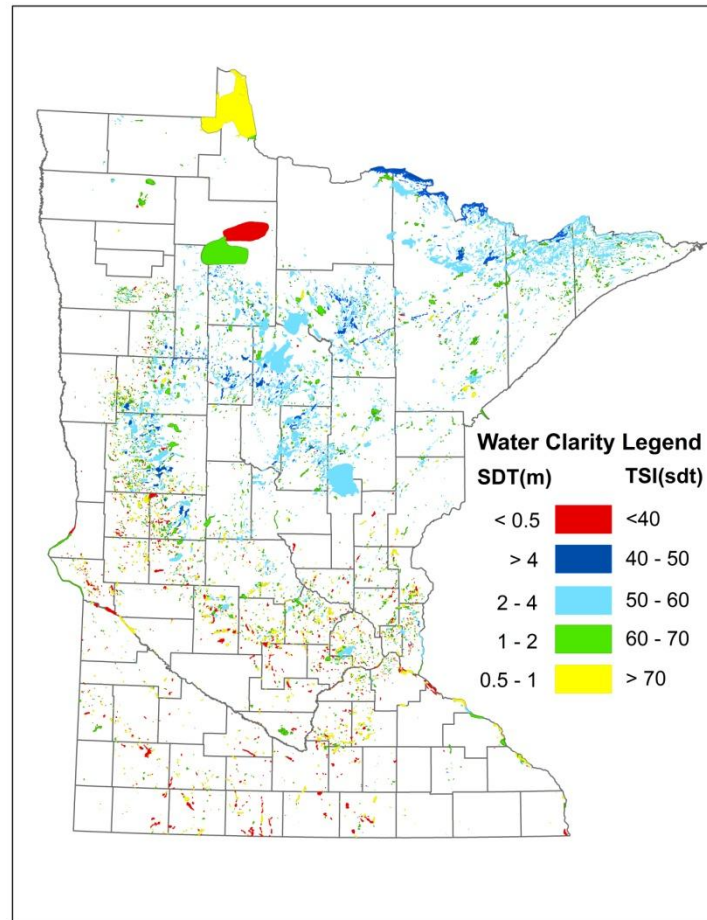
STATE OF OUR LAKES



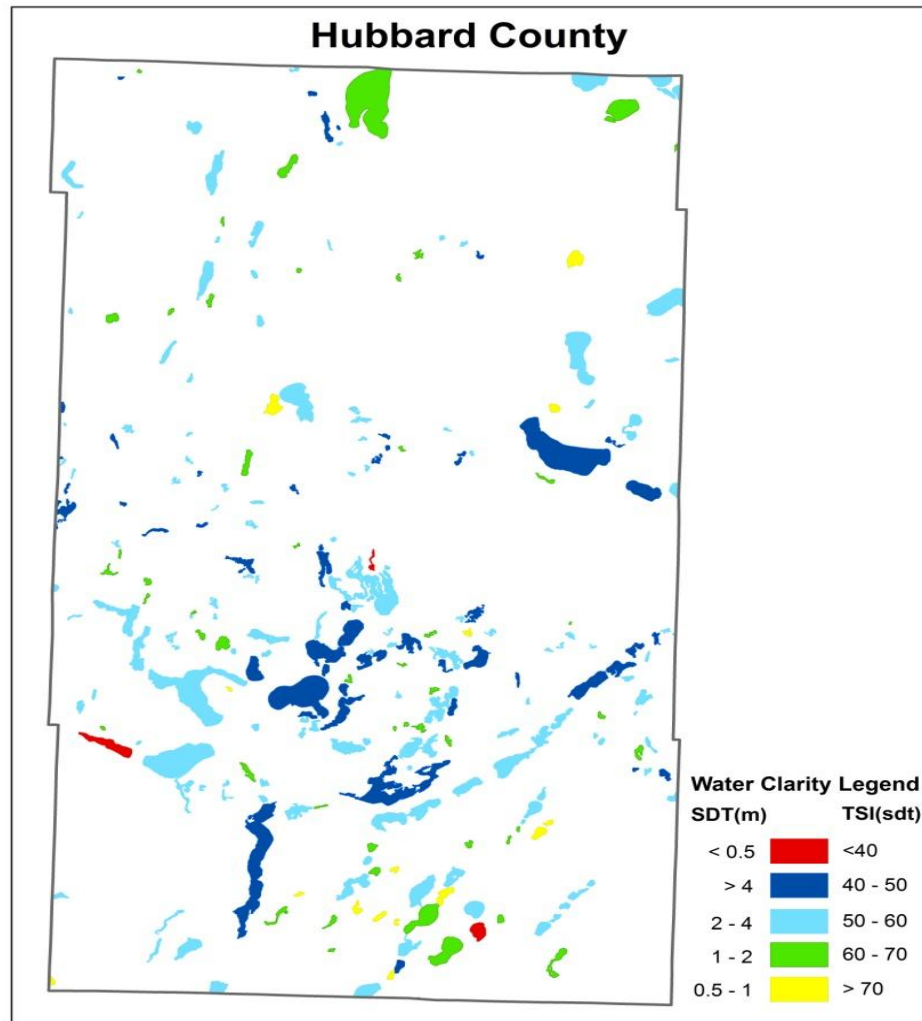
- Because lakes are a way of life....it's imperative we maintain and improve water quality for present and future generations.



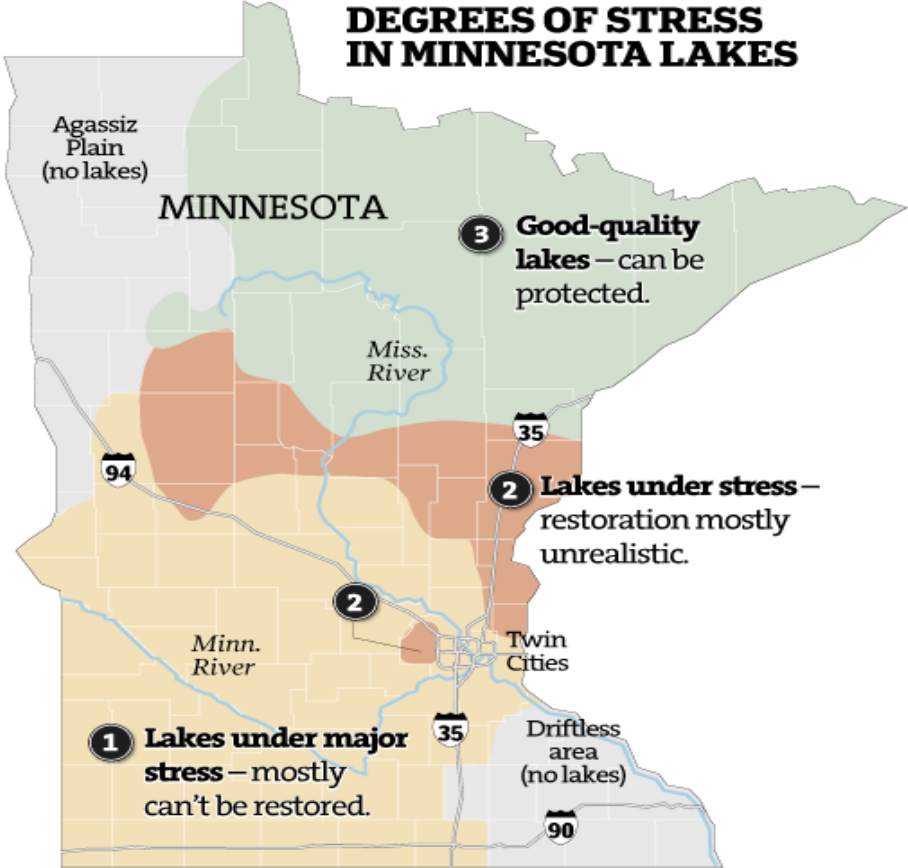
Minnesota “Land of 10,000 Lakes”



Hubbard County Lakes and Water Clarity



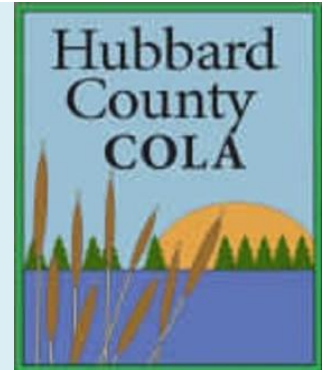
Minnesota Lakes Under Stress!



Source: Provided by Ron Way using information from the Minnesota Department of Natural Resources and the U.S. Environmental Protection Agency

MARK BOSWELL • Star Tribune

STATE OF OUR LAKES



Help! We're Surrounded By AIS

- What does that mean?
 - County's All Around Us!
 - We've Shielded it so far!
 - It's going to be a Battle
 - We've made a difference!
- Help Protect our Clear, Clean Waters.



STATE OF OUR LAKES



- We can protect our most precious resources for generations to come. **WE CAN MAKE A DIFFERENCE!** Special thanks to Richard Hamilton Smith for sharing his photos!



The Value of Clean Water

- The Hubbard County Tax Study – 2011
 - Closer Look at Water Influenced Property
- The Economics of Fishing in Minnesota
- Tourism and Minnesota's Economy

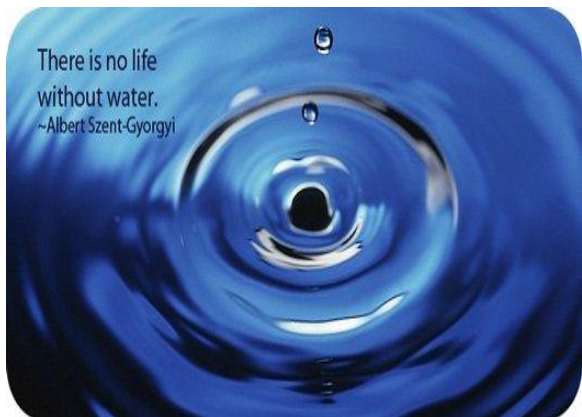
AIS Threatens Tourism and Property Values

Two Key Economic Interests of Minnesota

Hubbard County Tax Study - 2011

Countywide

- 23,796 total Real Estate Parcels
- 8,949 (37.6 %) Parcels w/Water Influence



Hubbard County Tax Study - 2011

In Conclusion

- **37.6 %** of Property Tax Parcels w/Water Influence Contribute **60 % of the total Taxable Market Value** in Hubbard County.
- The 37.6 % of parcels generates **53 % of Tax Revenue** in Hubbard County.



County Lake Parcels' Values 'Float the Boat'



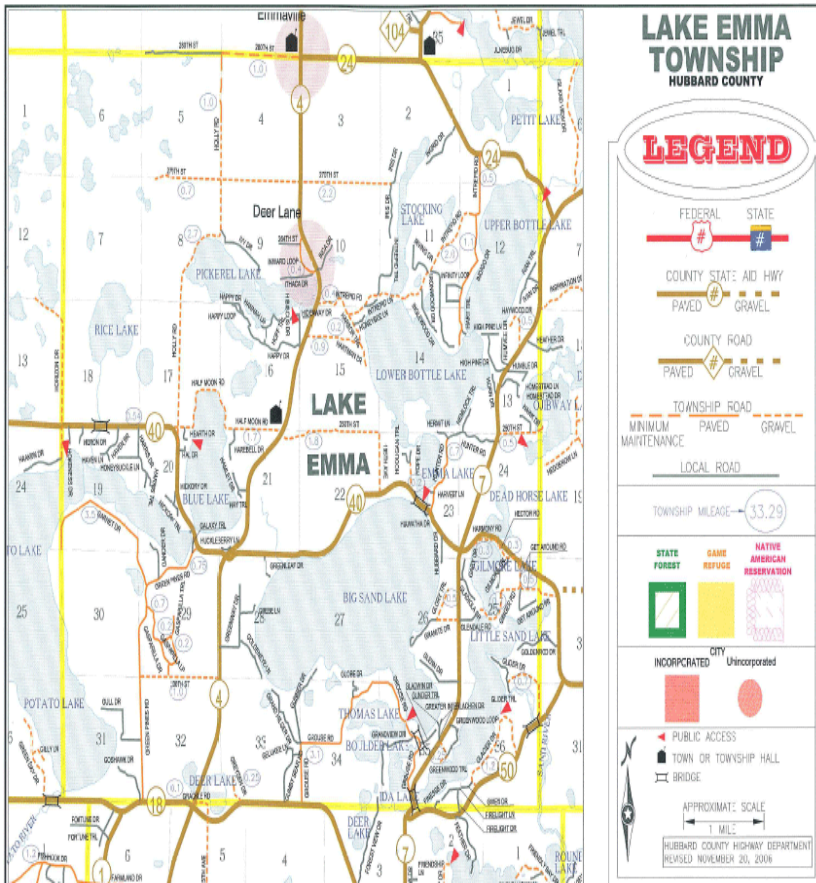
Bob Hanson, Assessor

- County Commissioners Learn about the **Economic Clout** that Lake Properties Wield.

Kathy Grell, Commissioner

- Lake Properties **“Float the Boat”** said Kathy Grell.
- *Park Rapids Enterprise, April 9, 2011.*

The Value of Clean Water is Critical for Lake Emma Township



- In Lake Emma Township, Water Influenced Property represents **87.5 % of TMV** and **90 % of the Property Tax Revenue.**
- Lake Emma Township Forms Grant Program to Protect Lakes.

Economics of Fishing in Minnesota

*2017 report from “Economic Contributions of Recreational Fishing: U.S. Congressional Districts”.

- **Anglers while Fishing In Minnesota:**

- **Spend \$2.4 Billion**

- **Support 35,461 Jobs**

- **\$4.2 Billion Impact the State’s Economic output**

To maintain Great Fishing and the Economic Value of our Public Waters, We must Stop the Spread of AIS.

Tourism and Minnesota's Economy

*Source: Explore Minnesota

- Travel / Tourism in Minnesota:
 - Sales: \$14.4 Billion in Gross Sales
 - Jobs: 260,000 full & part-time jobs.



- Travel / Tourism in Hubbard County
 - Sales: \$33.5 Million
 - Jobs: 742

Lake Recreation and Tourism are Critical Components of the Economy in Minnesota.



Economics of AIS

1. Economic Impact of AIS

a) Examples of AIS Impacts

2. Economic Spending for AIS

a) State Spending for AIS

b) Local Spending for AIS

- Townships / Cities
- Lake Associations (Citizens)

ECONOMIC IMPACT OF AIS

- ❖ **Wisconsin Study --- 13% reduction in property values -- EWM**
- ❖ **Mille Lacs Lake --- \$31 Million of TMV Lost in one county--ZM/SWF**
- ❖ **Washington State Study -- 19% reduction in property values – EWM**



**STOP AQUATIC
HITCHHIKERS!™**

ECONOMIC IMPACT OF AIS



❖ **Lake Koronis -- Starry Stonewort --- Spent & Track about \$80,000.**

❖ **Includes \$44,000 of “in-kind” labor.**

❖ **Wow!!!! Cost of mitigation**

❖ **All anecdotal---NO DEFINITIVE STUDY IN MN ON THE PROPERTY VALUE OR ECONOMIC IMPACT OF AN AIS INFESTATION**

❖ **HOWEVER --- WE KNOW THERE IS ECONOMIC, ECOLOGICAL, FISHING, AND SOCIAL IMPACT WHEN A LAKE OR REGION IS INFESTED**



***70 Years of Recreational
Enjoyment is now Ruined***

EXAMPLES OF ECONOMIC IMPACT



**STOP AQUATIC
HITCHHIKERS!**

***WISCONSIN STUDY INDICATED A 13% REDUCTION OF PROPERTY VALUES WITH THE INFESTATION OF EURASIAN WATER MILFOIL (ZEBRA MUSSELS WILL BE MORE)**

WATERSHED (CY2011)	TMV BASE <i>TOT. NET TAXES</i>	10% TMV LOSS <i>TAX LOSS</i>	13%* TMV LOSS <i>TAX LOSS</i>	30% TMV LOSS <i>TAX LOSS</i>
LONG LAKE (Henrietta & Hubbard Twp)	\$211MM <i>\$1,578K</i>	\$21.1MM <i>\$157.8K</i>	\$27.4MM <i>\$205K</i>	\$63.3MM <i>\$473.4K</i>
MANTRAP CHAIN OF LAKES (Mantrap, Big Sand, Lt Sand, Belle Taine Lakes)	\$367MM <i>\$2,689K</i>	\$36.7MM <i>\$268.9K</i>	\$47.7MM <i>\$349.6K</i>	\$110.1MM <i>\$806.7K</i>
FISH HOOK & POTATO LAKE (Arago/Lk EmmaTwp) <i>** Includes F.H. River</i>	\$174MM <i>\$1,621K**</i>	\$17.4MM <i>\$162.1K**</i>	\$22.6MM <i>\$210.7K**</i>	\$52.2MM <i>\$486.3K**</i>
PLANTAGENET (Rockwood & Helga Twp)	\$43.7MM <i>\$349K</i>	\$4.4MM <i>\$34.9K</i>	\$5.7MM <i>\$45.4K</i>	\$13.2MM <i>\$104.7K</i>
KABEKONA (Lakeport Twp)	\$100MM <i>\$905K</i>	\$10MM <i>\$90.5K</i>	\$13MM <i>\$117.7K</i>	\$30MM <i>\$271.5K</i>

**County Infestation could cause a Significant Tax Revenue
Gap**

EXAMPLES OF ECONOMIC IMPACT



**STOP AQUATIC
HITCHHIKERS!**

***WISCONSIN STUDY INDICATED A 13% REDUCTION OF PROPERTY VALUES WITH THE INFESTATION OF EURASIAN WATER MILFOIL (ZEBRA MUSSELS WILL BE MORE)**

WATERSHED (CY2011)	TMV BASE <i>TOT. NET TAXES</i>	10% TMV LOSS <i>TAX LOSS</i>	13%* TMV LOSS <i>TAX LOSS</i>	30% TMV LOSS <i>TAX LOSS</i>
LONG LAKE (Henrietta & Hubbard Twp)	\$211MM <i>\$1,578K</i>	\$21.1MM <i>\$157.8K</i>	\$27.4MM <i>\$205K</i>	\$63.3MM <i>\$473.4K</i>
MANTRAP CHAIN OF LAKES (Mantrap, Big Sand, Lt Sand, Belle Taine Lakes)	\$367MM <i>\$2,689K</i>	\$36.7MM <i>\$268.9K</i>	\$47.7MM <i>\$349.6K</i>	\$110.1MM <i>\$806.7K</i>

County Infestation could cause a Significant Tax Revenue Gap

ECONOMIC SPENDING FOR AIS

❖ \$8 Million DNR budget (\$1.7 Enforcement Inspection)

❖ **\$10 Million in State Aid to Counties**

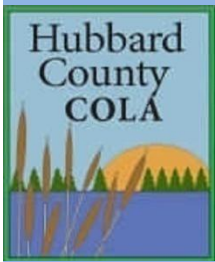
❖ \$6 Million Funding to MAISRC for research building/Research

❖ \$4.4 Million LSOHC Legacy funds to Initiative Foundation

❖ **“Squillions” of hours of volunteer AIS Prevention**

❖ **“Lots” of local organization funding (lake associations, cities, etc.)**



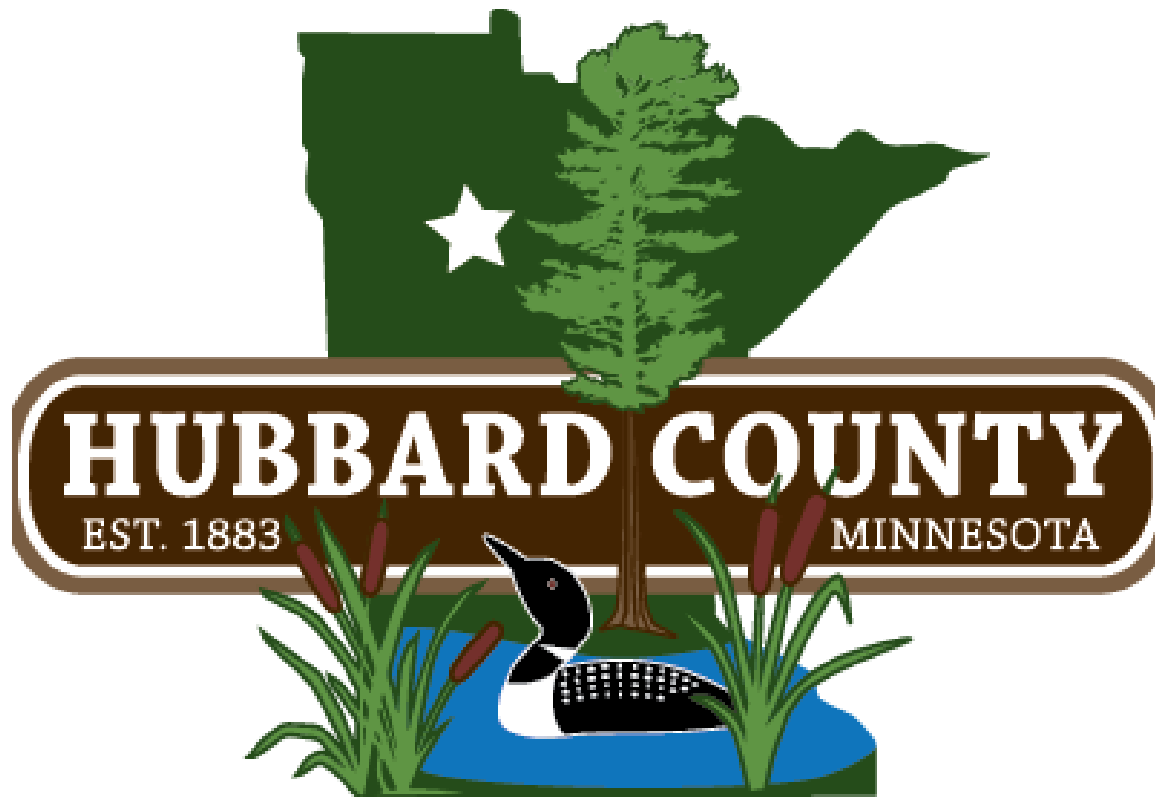


LOCAL SPENDING FOR AIS



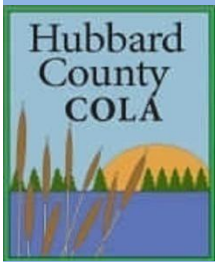
- LGU's
 - Townships
 - Cities
 - County
- Lake associations
 - Supplemental funding (extraordinary)
 - Volunteers





Clean Water \$'s

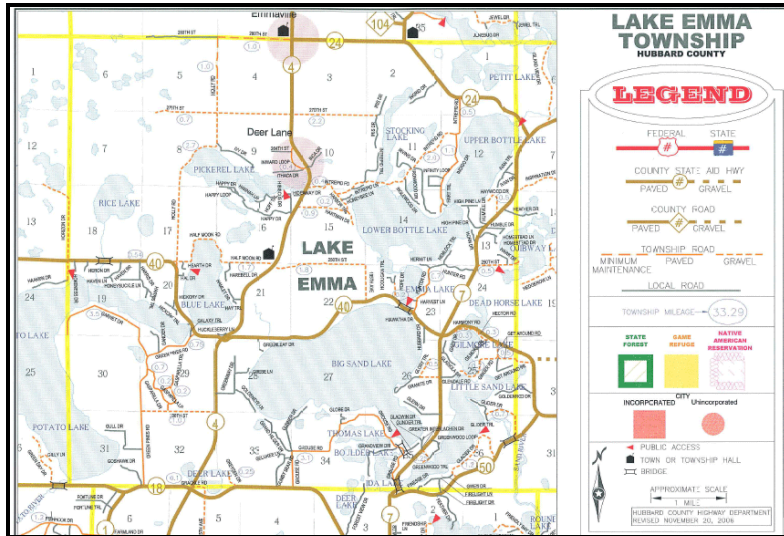
\$35,000 annually For AIS Coordinator



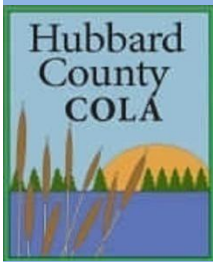
Lake Emma / COLA Partnership



Townships Play Key Role



**HOW DID TOWNSHIPS GET INVOLVED
IN LAKE PROTECTION**



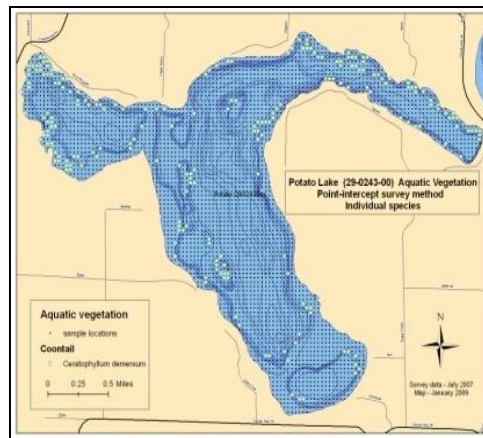
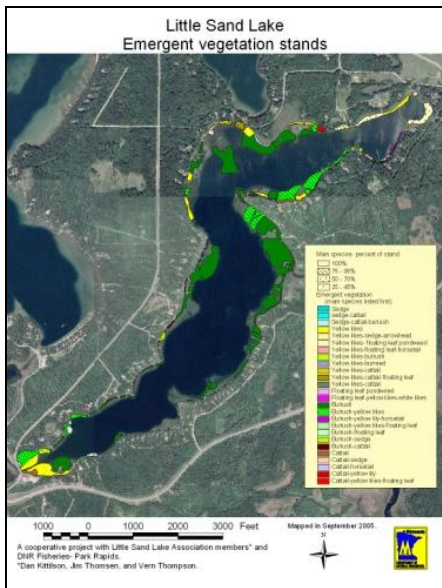
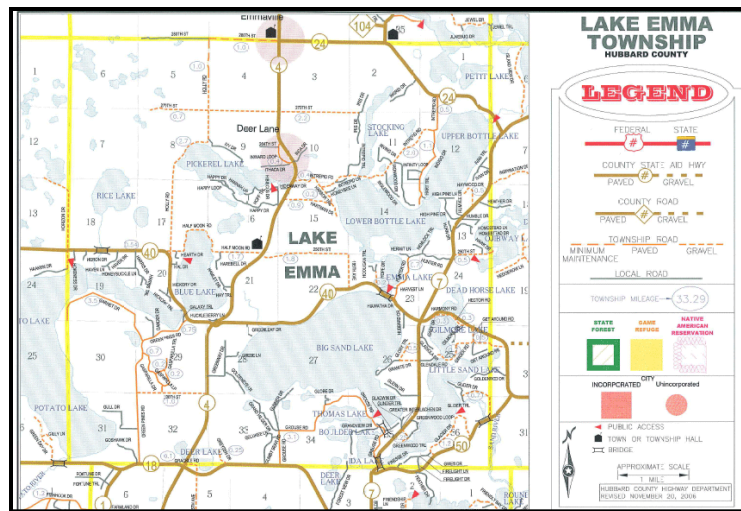
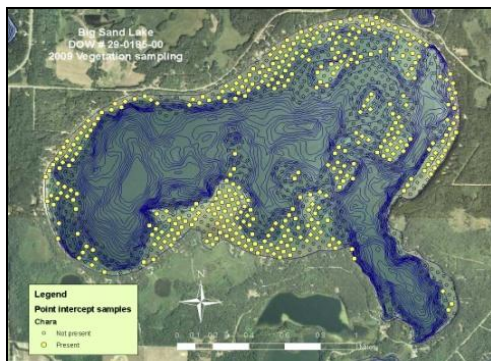
Lake Emma / COLA Partnership



HOW IT ALL STARTED

- 2009 Partnership for Watercraft Inspections in Lake Emma Township (500 hours-Inspection)
- Partners working together include:
 - MDNR, Lake Emma Township (\$1000)
 - Lake Associations & Zorbaz Restaurant (\$2000)
- This program led to the impetus of the Lake Emma Township Healthy Lakes Partnership and our watercraft inspection program.

LAKE EMMA TOWNSHIP HEALTHY LAKES PARTNERSHIP GRANT PROGRAM



Lake Emma Township Healthy Lakes Partnership

Funding for Lake Protection since 2010

- Participating Lakes: Blue, Bottles, Big Sand, Little Sand, Pickeral, Potato
- **Total Grants awarded: \$69,250**
- Successful Model for other Townships to Join!

TOWNSHIPS FOLLOW!



Hubbard County Townships Join In Lake Protection

- **8 Townships / one City** make commitments for AIS Prevention in 2017.
- Mantrap Township - \$9897.50
- Total Commitments to date = **\$31,111.50 in 2017.**



TOWNSHIPS TAKE ACTION

Hubbard County Township & City Contributions for Watercraft Inspections

2012 – 2016

\$152,451



**STOP AQUATIC
HITCHHIKERS!™**

- LGU's Recognize the Value of Clean Water in Hubbard County.

LAKE ASSOCIATIONS TAKE ACTION

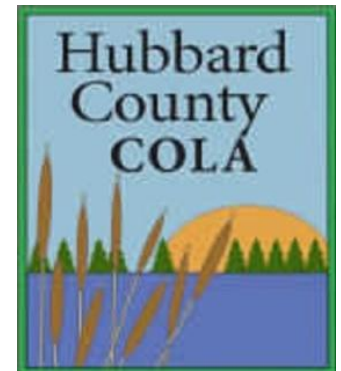
Lake Association Contributions for Watercraft



Inspections

2012 – 2016

\$338,444



- Hubbard County Coalition of Lake Associations is the Leader in Protecting Hubbard County Lakes and Rivers.

CLEAN WATER \$'s

Supplemental Funding for Watercraft Inspections from Lake Associations, Cities and Hubbard County Townships

2012 – 2016

\$490,895



2017 Supplemental AIS Inspection Funding Commitments

Lake Associations, Cities & Townships

- Supplemental Funding Commitments for 2017

\$119,365

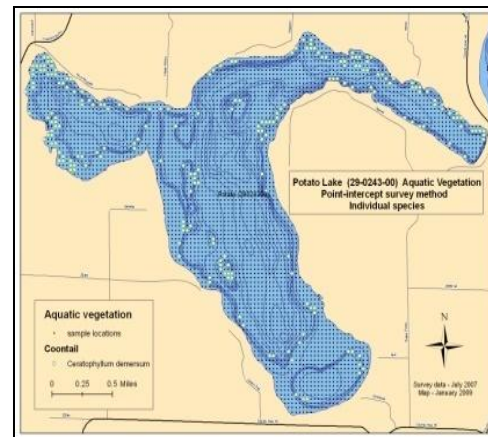
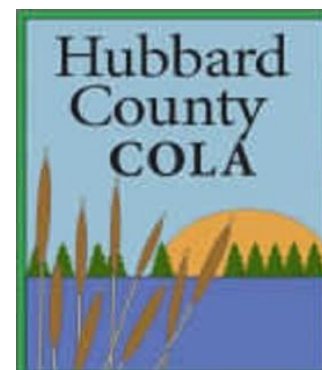
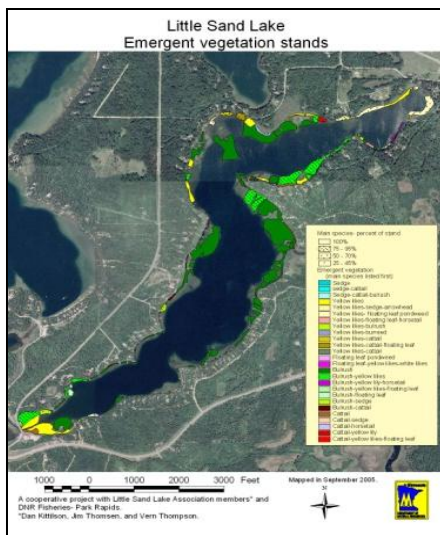
2012 – 2017 Local Funding for Lake Protection

\$610,260

Lake Property Drives Majority of Tax Base

In-Kind Spending for AIS

- Volunteer Hours toward AIS Prevention!!
- **“Squillions” of hours!**



HUBBARD COUNTY FACTS

OUR CLEAN LAKES ARE A MAJOR RESOURCE

MANY DESTINATION LAKES; EXCELLENT WATER QUALITY

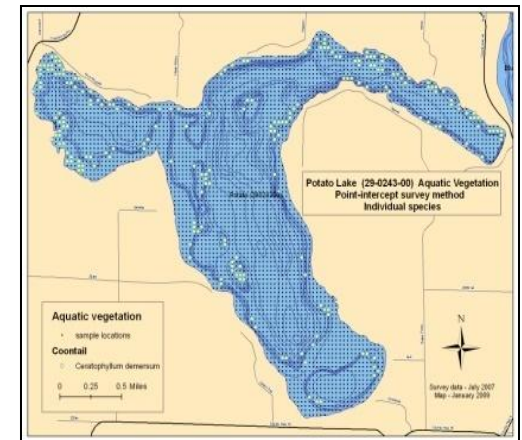
- ❖ **ECONOMIC, RECREATIONAL, SWIMMING, AND FISHING**
- ❖ **RESORTS/CAMPGROUNDS DEPEND ON CLEAN LAKES**
- ❖ **FISHING TOURNAMENTS & WATER-RELATED EVENTS**

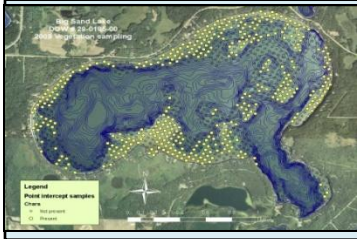
TAX ENTITY (Township)	2011 TMV (Water Related)	% of Total TMV	2011 Net Taxes (Water Related)	Note
Lake Emma	\$357,011,600	87.5%	\$2,668,795	---
Nevis	\$209,118,300	78.2%	\$1,401,933	---
Hubbard	\$170,000,700	69.7%	\$1,204,173	---
Henrietta	\$150,459,100	57.1%	\$1,114,173	---
Mantrap	\$145,453,200	80.4%	\$900,566	---
Arago	\$139,303,900	74.5%	\$1,006,127	---
Crow Wing Lake	\$127,133,800	84.6%	\$691,316	---

Lake Property Drives Majority of Tax Base

A Shared Resource & Responsibility

- Lakeshore is Individual Property
- **But Lakes are a Shared Resource**
- Everyone is Responsible for
Protecting Minnesota's
Water Legacy!





A Shared Resource and Responsibility



Stewardship

- **THOSE WHO HAVE THE PRIVILEGE TO KNOW, HAVE THE DUTY TO ACT**.....Albert Einstein!
- It's Our Responsibility to Make it Possible for our Kids and their Kids to have the Same Opportunities that We Have Had.



A Shared Resource & Responsibility

Anglers have Key Role in AIS Prevention

I've Made The Commitment To Stop Invasive Species

Have YOU?

TAKE THIS Hubbard County Map AND MESSAGE FROM **JASON DURHAM** Go Fish! Guide Service

Spiny Waterflea
Fouls fishing gear



Zebra Mussel
Filters the bottom of food chain



Curlyleaf Pondweed
Forms weed mats



Eurasian Watermilfoil
Crowds out native plants



Take The Time To Stop These Invasive Species

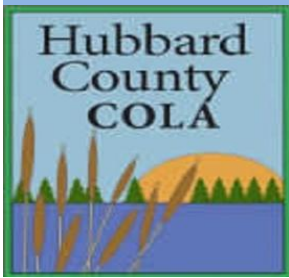
"Make the Commitment to prevent the spread of invasive species and be a hero for the lake experience of future generations."

Jason Durham

Sleeping Fawn Resort

- Intercepts Boat coming to Resort with zebra mussels attached to prop in 2016!
- **Thanks! Joe**





How Can You Help?

Become a Casual Observer
Watching for Aquatic
Invasive Species When You
enjoying our Beautiful
Lakes in Hubbard County!



Opportunistic Searches for AIS

The Casual Discovery of Aquatic Invasive Species



Early Detection

Why is early detection important?

- Detect a new infestation before it becomes widespread and established lake wide or spread countywide.



OPPORTUNISTIC SEARCHES FOR AIS IN HUBBARD COUNTY

- Casual, non-structured efforts to look for AIS.
- Any time by anyone on the Lake
- Citizens living or Recreating on the Lake



WHY ARE OPPORTUNISTIC SEARCHES IMPORTANT

- To be effective.....we need to engage more citizens to be “actively” looking for new introductions of AIS.
- Simply.....we need to further expand our “Army of Eyes on the Water” to detect a new AIS and for rapid response.
- **Opportunistic Searches can help Increase the number of people looking for AIS on your favorite lake.**

HOW AIS IS OFTEN DISCOVERED

- Most zebra mussel introductions are often discovered casually by children or **citizens** enjoying the lake. On Cass Lake someone found zebra mussels while collecting shells on a beach on Cedar Island.



HOW UNTRAINED PEOPLE CAN HELP WITH AIS DETECTION

- Turn over rocks looking for zebra mussels
- Check fish line for evidence of Spiny Waterflea



- Cruise your shoreline looking for suspicious plants.



HOW UNTRAINED PEOPLE CAN HELP WITH AIS DETECTION

- Get kids searching for snails or clams.



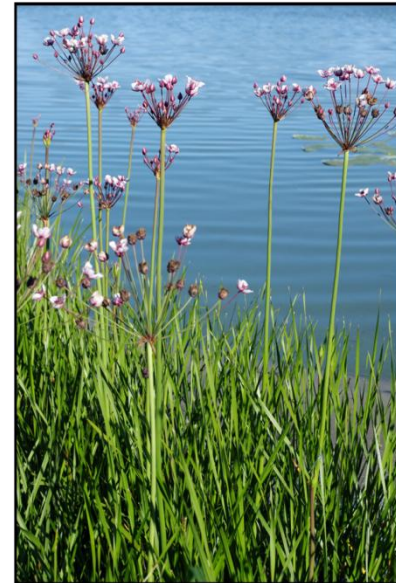
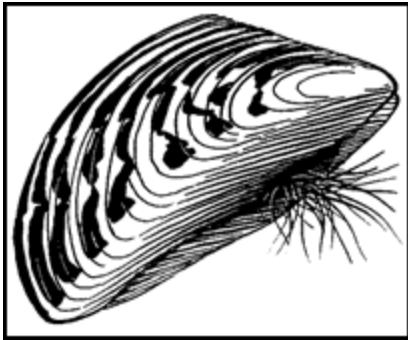
HOW UNTRAINED PEOPLE CAN HELP WITH AIS DETECTION

- Check washed up plants on your shoreline, vegetation growing near your shore or caught on your fishing hook!



How Can I Learn to Identify AIS

<http://www.hubbardcolamn.org/identification-facts--monitoring-pictures.html>





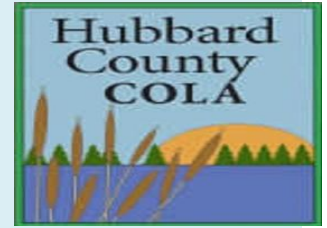
**STOP AQUATIC
HITCHHIKERS!**

HOW CAN YOU HELP?

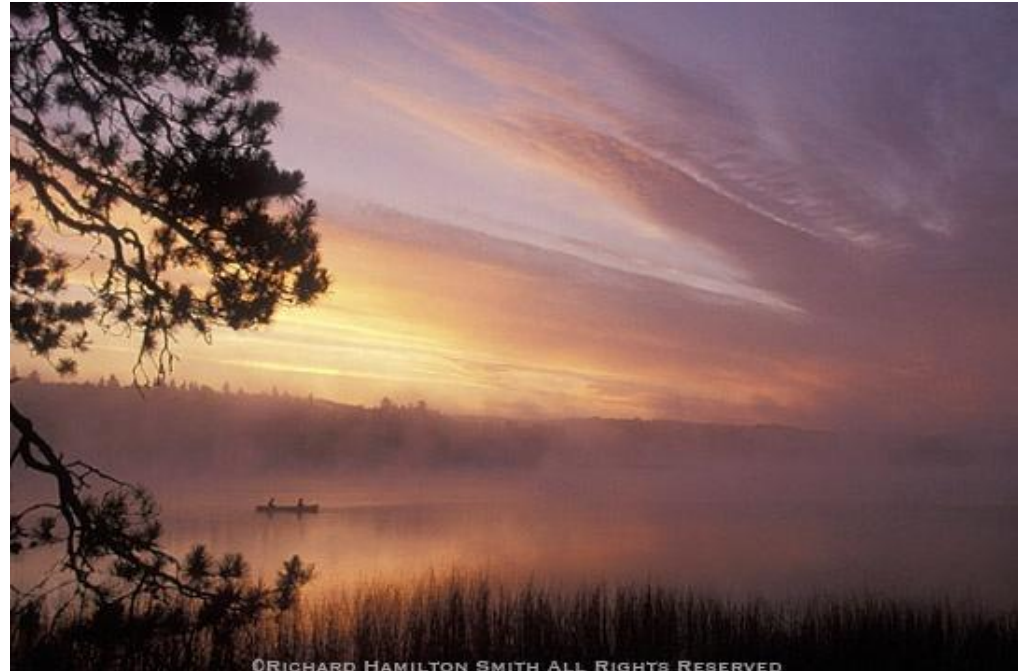
- Visit COLA's exhibit following the program.
- Volunteer to be a Casual Observer
- Take an AIS Identification Class.
- Sign up for our Zebra Mussel Monitoring On-line Survey.
- Suspend a Veliger Settlement Sampler from Your Dock.
- Volunteer to Sample for Zebra Mussels with Plankton Net.



ACKNOWLEDGEMENTS



- Special Thanks to Richard Hamilton Smith for sharing his special photos!
- All property rights reserved for these Photos.



QUESTIONS?

