

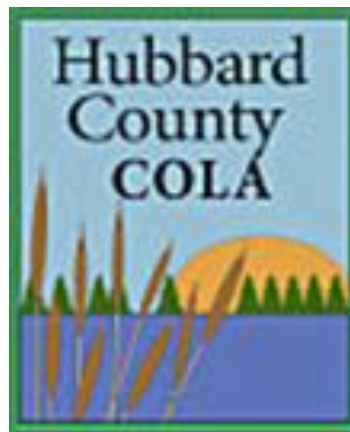
The Value of Clean Water – A Shared Resource and Responsibility

- **KEY TOPICS TO DISCUSS**

- 1) **The State of Our Lakes**
- 2) **The Value of Clean Water**
- 3) **The Economics of AIS**
- 4) **Early Detection – How can You Help?**

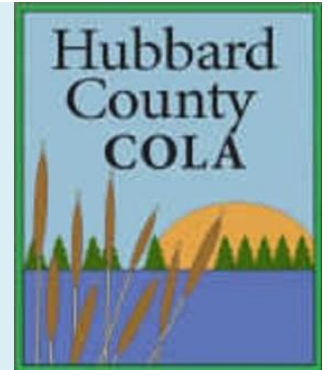


**STOP AQUATIC
HITCHHIKERS!™**



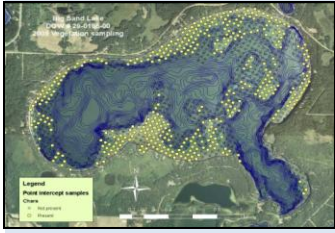


STATE OF OUR LAKES



Outstanding Water Resource

- Majority of lakes with improving or stable water quality.
- Lakes with good water quality are sensitive to change – need greater protection.



STATE OF OUR LAKES





STATE OF OUR LAKES

Help! We're Surrounded by AIS

Our Lakes are mostly AIS Free!

- **Zebra Mussels all around (N-S & E-W)**
 - Crow Wing (46 lakes), Douglas (33), Ottertail (24), Becker (12), Cass (9), Beltrami (9).
- **Starry Stonewort (North & South)**

THE VALUE OF CLEAN WATER

Hubbard County Tax Study

- **37 %** of tax parcels have water influence
- Water influence parcels represents **60 %** of the total Taxable Market Value.
- Parcels with water influence generate **53 %** of Tax Revenue in Hubbard County.
- **Lake Properties “Float the Boat”**

THE VALUE OF CLEAN WATER

Past Summers in Park Rapids

Park Rapids, Minnesota

"So Long Desk!"

An opportunity for health, recreation, and sport await those who vacation in the Itasca Park and Mantrap Valley Region where stately pines and innumerable lakes with clear blue water and white sand beaches abound.

Recreation of every kind is here. The lakes are filled with fish — "Percy Mackie," Black Bass, Wall-Eyed and Great Northern Pike — which provide thrilling sport. An excellent golf course is easily accessible. Trails and fine roads offer opportunities for hiking and all day excursions.

Located in the pine country and easily reached on all weather roads, this region offers relief for hay fever. A healthy climate, with sunny days and cool evenings, it offers freedom from the excessive heat.

Park Rapids, a modern town of 2,200, has excellent school and hospital facilities and churches of every denomination.

Park Rapids makes an ideal place for your summer conventions. Plenty of accommodations at the local Hotels and nearby Lake Resorts, Large Armory, Auditoriums, and other Municipal Buildings are available for Convention purposes. You will find the Park Rapids Commercial Club a real host to the Conventions you bring here.

For information and reliable resort data, write

Secretary,
Community Club

FULLER'S

1935 FISHING DIRECTORY and Map

of
MINNESOTA'S ITASCA STATE PARK MANTRAP VALLEY REGION

Complete List of
Entries and Prize-Winners
in the
..... **Booster Fishing Contest**
Season 1934

FULLER'S Tackle Shops
INFORMATION BUREAU
Park Rapids, Minn.

Copyright Fuller's Tackle Shops, Inc.

Itasca Park
MANTRAP
VALLEY
REGION

Angling & Tourism are Key

Fishermen's **GOLDEN BOOK**
— and —
FISHING DIRECTORY

Minnesota's Itasca Park-Mantrap Valley-Crow Wing Lakes Region

1991

THE NATION'S VACATION REGION

The Largest Variety of Fishing to be found in any area of the U.S.A.

Official Record of 1990
Booster Fishing Contest

OUR 75th YEAR

REED'S SPORTING GOODS
Park Rapids, MN
* Information

ADVERSE EFFECTS OF AIS

Invasive Species impact our environment!

- Kill native species



- Displace native aquatic plants.



ADVERSE EFFECTS OF AIS

Invasive Species Impact our Society

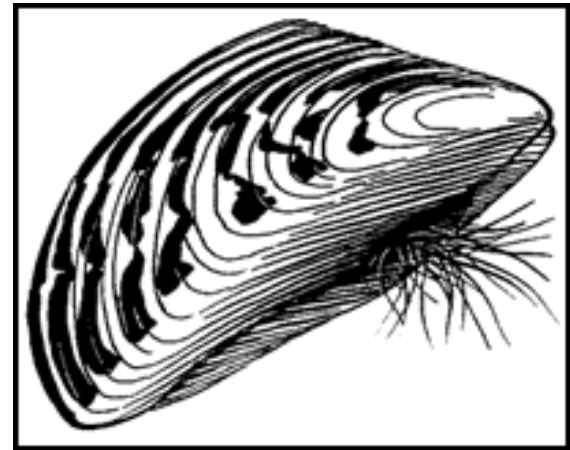
- **Impede recreation!**



- **Interfere with boating!**



FISH FOOD CHAIN IS IMPACTED BY AIS



A CLOSER LOOK AT STARRY STONEWORT



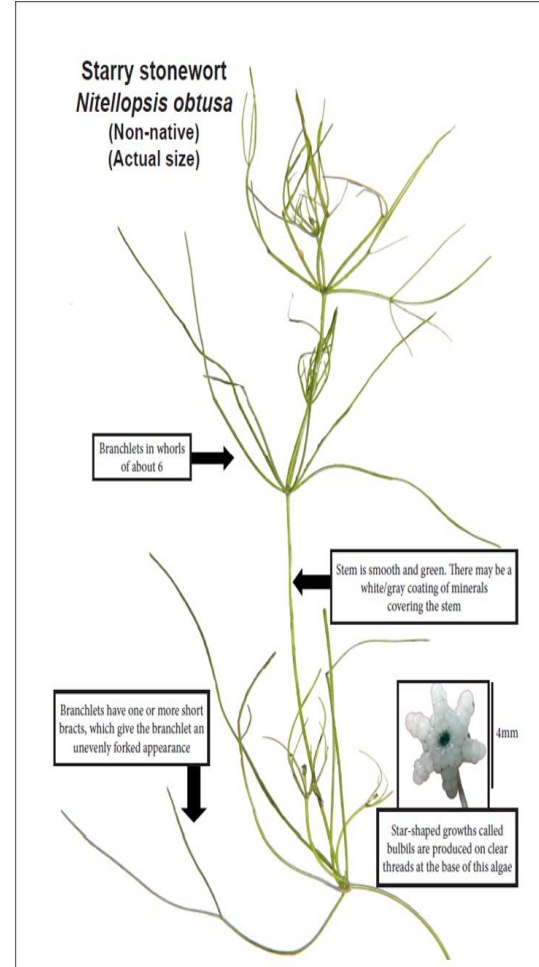
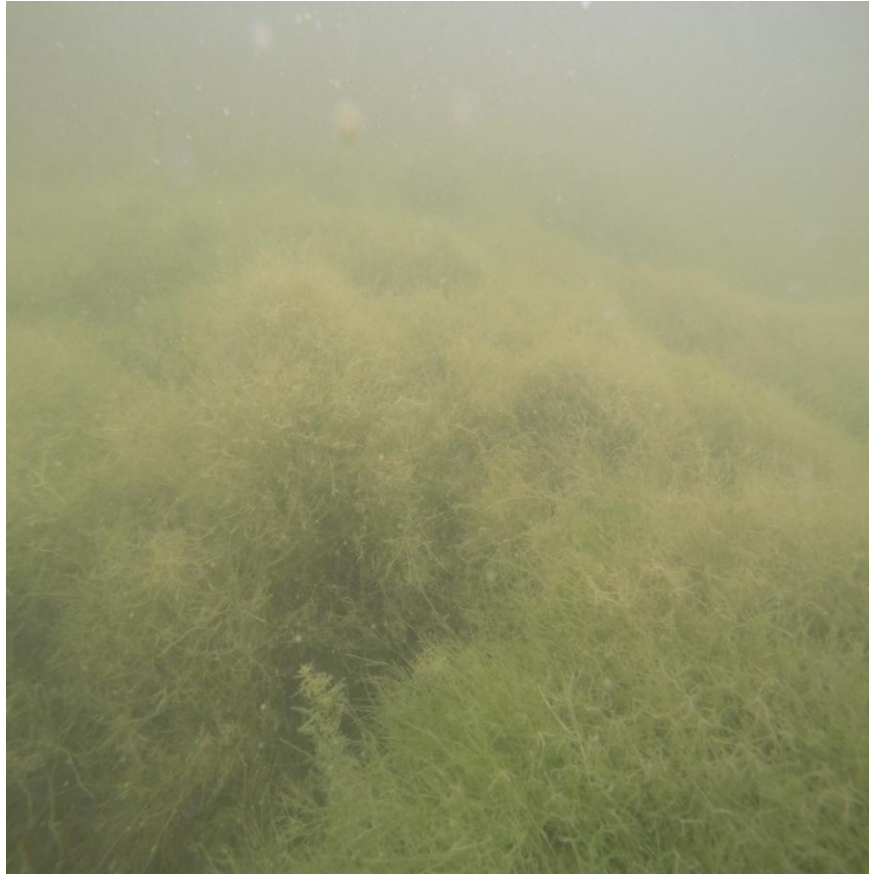
A CLOSER LOOK AT STARRY
STONEWORT
LAKE KORONIS



LAKE KORONIS



Starry Stonewort in Big Turtle Lake



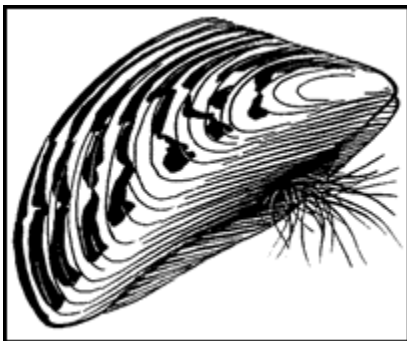
Bunk Trailers Under Scrutiny



Vegetation Sealed between Boat & Trailer Bunks!



A CLOSER LOOK AT ZEBRA MUSSELS



MN Aquatic Invasive Species
Research Center

Genetic Research on Zebra Mussels

**Minnesota's rate of new inland
invasions is now among the
highest in the US.**

MAISRC

Genetic Research on Zebra Mussels

Super –Spreader Lakes?

**Mille Lacs Lake: not the source
for any of the 35 lakes
invaded after 2005!**

MAISRC

Genetic Research on Zebra Mussels

- **Vectors that transmit juveniles or adults – docks, lifts, resident boats!**
- **Can introduce large #'s of mussels per event.**

MAISRC

Mussels spread locally in lake-rich region

- One or more infestations from outside the region.
- After this – local spread is rapid.

PELICAN LAKE

The Center of the Universe





***70 Years of Recreational
Enjoyment is now Ruined***

ECONOMIC IMPACT OF AIS

❖ **Wisconsin Study --- 13% reduction in property values – EWM**

❖ **Washington State Study -- 19% reduction in property values – EWM**



**STOP AQUATIC
HITCHHIKERS!™**

EXAMPLES OF ECONOMIC IMPACT

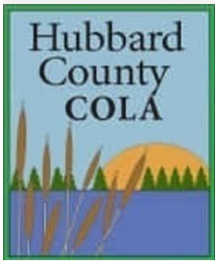


**STOP AQUATIC
HITCHHIKERS!**

***WISCONSIN STUDY INDICATED A 13% REDUCTION OF PROPERTY VALUES WITH THE INFESTATION OF EURASIAN WATER MILFOIL (ZEBRA MUSSELS WILL BE MORE)**

WATERSHED (CY2011)	TMV BASE <i>TOT. NET TAXES</i>	10% TMV LOSS <i>TAX LOSS</i>	13%* TMV LOSS <i>TAX LOSS</i>	30% TMV LOSS <i>TAX LOSS</i>
LONG LAKE (Henrietta & Hubbard Twp)	\$211MM <i>\$1,578K</i>	\$21.1M M <i>\$157.8K</i>	\$27.4M M <i>\$205K</i>	\$63.3MM <i>\$473.4K</i>

County Infestation could cause a Significant Tax Revenue Gap



LOCAL SPENDING FOR AIS



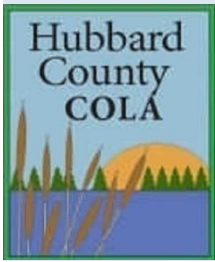
- LGU's
 - Townships
 - Cities
 - County
- Lake associations
 - Supplemental funding (extraordinary)
 - Volunteers





Clean Water \$'s

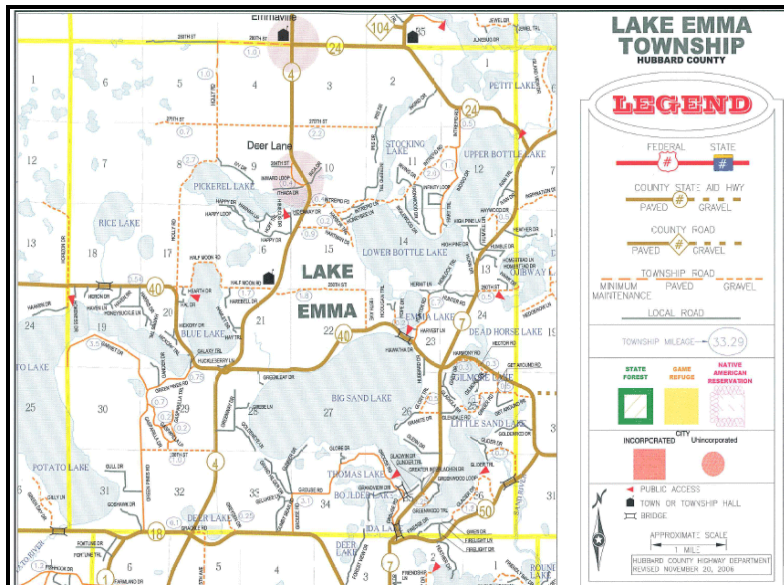
\$35,000 annually For AIS Coordinator



Lake Emma Township / COLA Partnership



Townships Play Key Role



TOWNSHIPS TAKE ACTION

Hubbard County Township & City Contributions for Watercraft Inspections

2012 – 2017

\$183,562



- LGU's Recognize the Value of Clean Water in Hubbard County.

LAKE ASSOCIATIONS TAKE ACTION

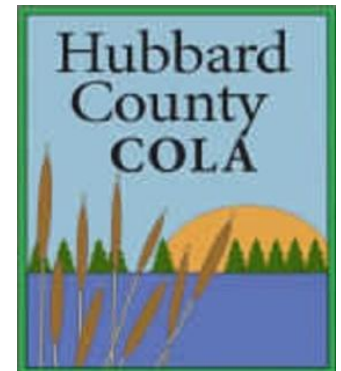
Lake Association Contributions for Watercraft



Inspections

2012 – 2017

\$426,690



- Hubbard County Coalition of Lake Associations is the Leader in Protecting Hubbard County Lakes and Rivers.

Supplemental Funding for AIS Prevention / Inspection

Lake Associations, Cities and Townships Fund Watercraft Inspections

2012 – 2017

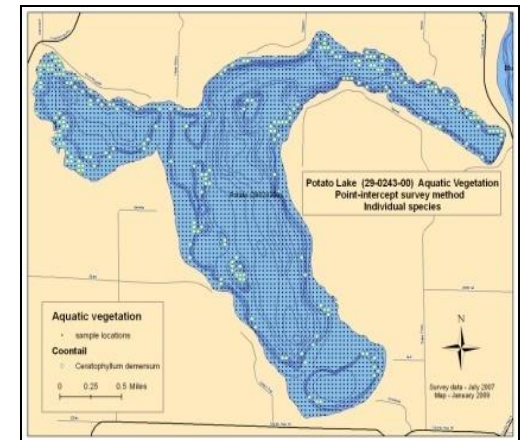
\$610,252

Lake property drives majority
of tax base!



A Shared Resource & Responsibility

- Lakeshore is Individual Property
- **But Lakes are a Shared Resource**
- Everyone is Responsible for
Protecting Minnesota's
Water Legacy!



A Shared Resource & Responsibility

Anglers have Key Role in AIS Prevention

I've Made The Commitment To Stop Invasive Species

Have YOU?

TAKE THIS Hubbard County Map AND MESSAGE FROM **JASON DURHAM** Go Fish! Guide Service

Spiny Waterflea
Fouls fishing gear

Zebra Mussel
Filters the bottom of food chain

Curlyleaf Pondweed
Forms weed mats

Eurasian Watermilfoil
Crowds out native plants

Take The Time To Stop These Invasive Species

"Make the Commitment to prevent the spread of invasive species and be a hero for the lake experience of future generations."
Jason Durham

Actual size of individual leaf

Resorts are Part of our Eyes on the Water- A Shared Responsibility

Sleeping Fawn Resort – Stocking Lake



Sleeping Fawn Resort

- Intercepts Boat coming to Resort with zebra mussels attached to prop in 2016!
- **Thanks! Joe**





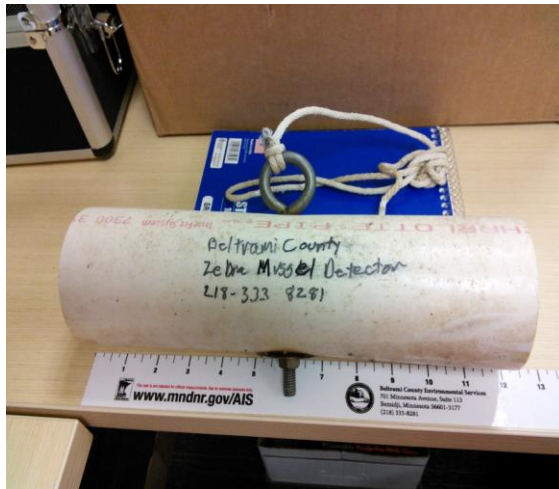
Early Detection



Why is early detection important?

- Detect a new infestation before it becomes established lake wide or spreads countywide.
- **Inspire** citizens to become involved & raise the level of awareness & **observation around AIS!**

Zebra Mussel Monitoring





How Can You Help?

Become a Casual Observer
Watching for Aquatic
Invasive Species When You
enjoying our Beautiful
Lakes in Hubbard County!

OPPORTUNISTIC SEARCHES FOR AIS IN HUBBARD COUNTY

- Casual, non-structured efforts to look for AIS.
- Any time by anyone on the Lake
- Citizens living or Recreating on the Lake



Why are Opportunistic Searches Important!



- To be Effective.....we need to Engage more Citizens to be “actively” looking for new introductions of AIS.
- Simply.....we need to further expand our “Army of Eyes on the Water” to detect a new AIS Infestation.
- **You Need a Boat Load(s) of People Looking for AIS on your Favorite Lake**



STATE OF OUR LAKES



- Because lakes are a way of life....it's imperative we protect our water quality for present and future generations.



STATE OF OUR LAKES



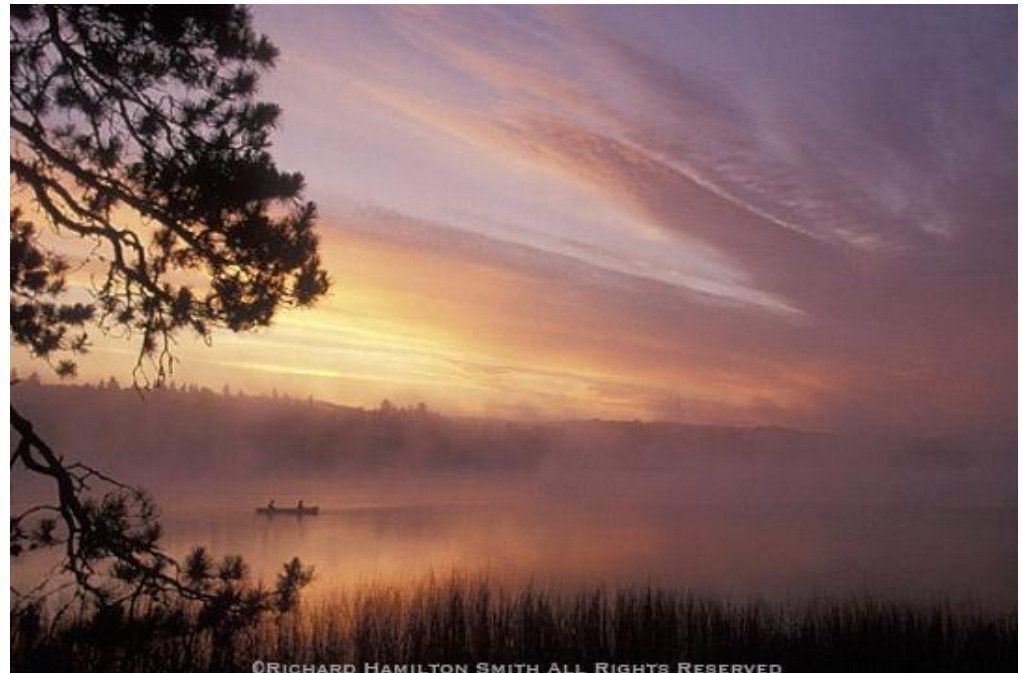
- We can protect our most precious resources for generations to come. **WE CAN MAKE A DIFFERENCE!** Special thanks to Richard Hamilton Smith for sharing his photos!



ACKNOWLEDGEMENTS



- Special Thanks to Richard Hamilton Smith for sharing his special photos!
- All property rights reserved for these Photos.



QUESTIONS?

